

SSFA comparison

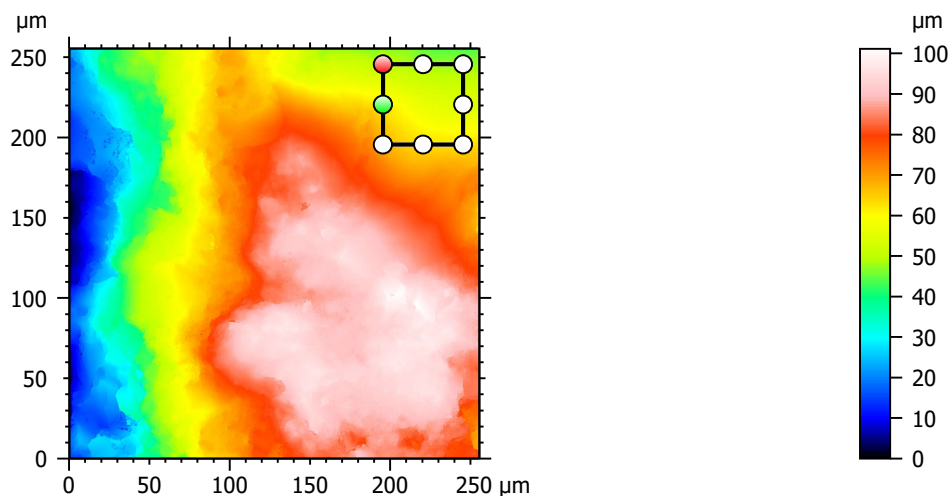
Template to process all lithic surfaces acquired with the Zeiss LSM 800 with the 50x/0.95 objective.

A. Processing

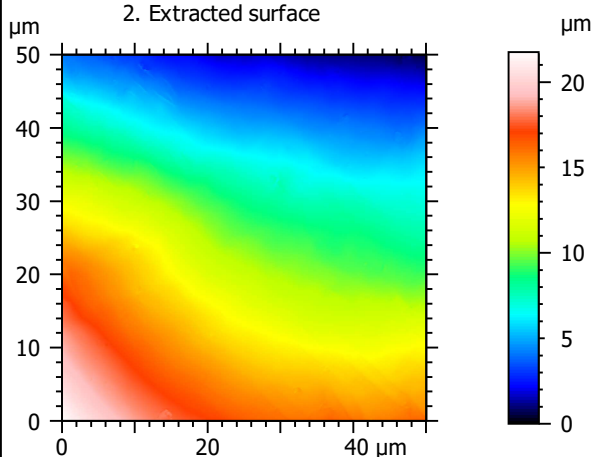
Identity card

Name:	QTZ3-2_LSM2_50x-0.95_20190801_Area2_Topo		
File path:	D:\Data\3Ddata\SSFA\Lithics\Original_surfaces\QTZ3-2_LSM2_50x-0.95_20190801_Area2_Topo.sur		
Created on:	8/1/2019 2:34:52 PM		
Studiable type:	Surface		
Axis:	X		
Length:	255.5	μm	
Size:	3000	points	
Spacing:	0.08519	μm	
Axis:	Y		
Length:	255.5	μm	
Size:	3000	points	
Spacing:	0.08519	μm	
Axis:	Z		
Layer type:	Topography		
Length:	101.1	μm	
Size:	65531	digits	
Spacing:	0.001543	μm	
NM-points ratio:	0.000 % (0 Pts)		

1. Acquired surface

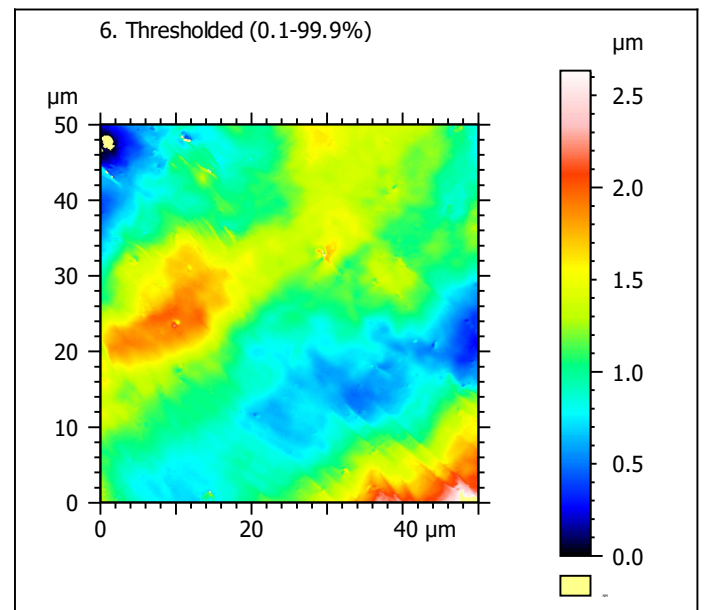
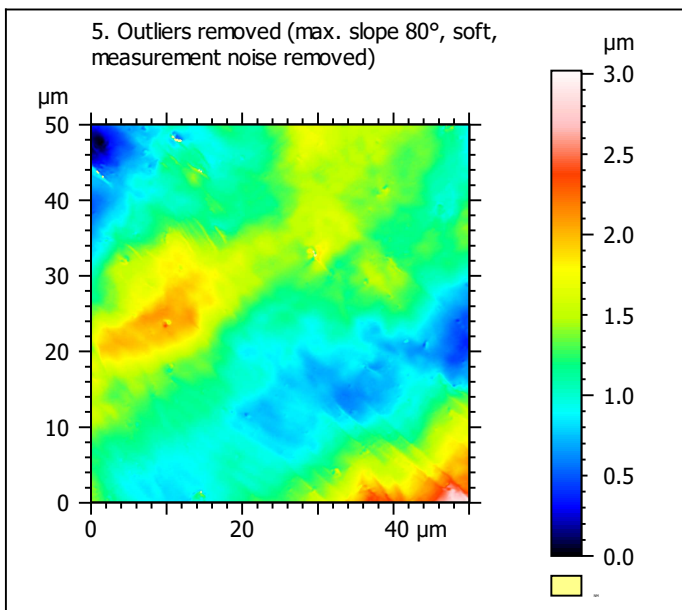
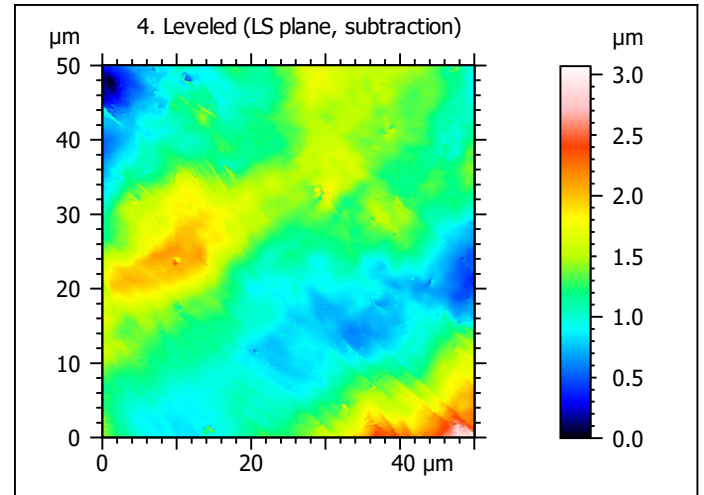
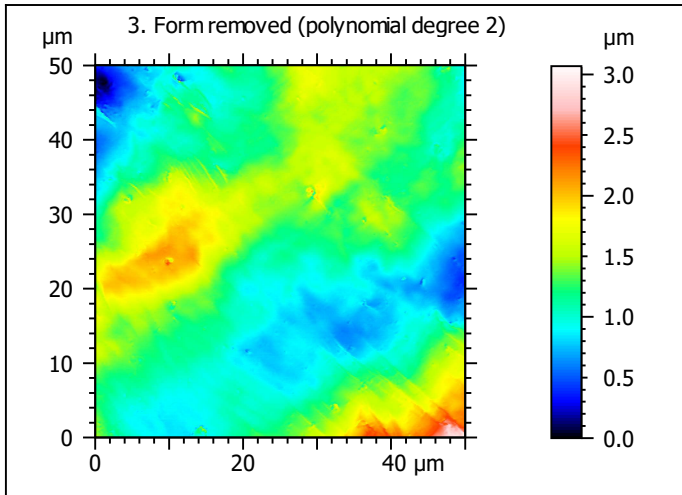


2. Extracted surface



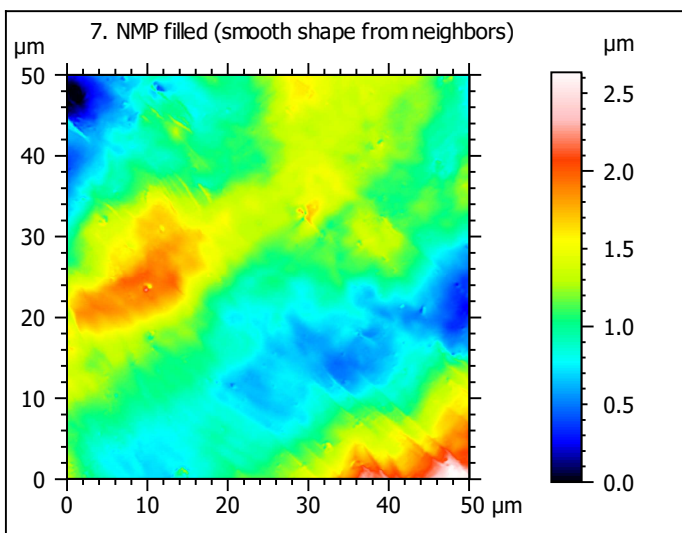
Identity card

Name:	QTZ3-2_LSM2_50x-0....opo > Extracted area		
Axis: X			
Length:	50.00	μm	
Size:	588	points	
Axis: Y			
Length:	50.00	μm	
Size:	588	points	
Axis: Z			
Layer type:	Topography		
Length:	21.75	μm	
Size:	14094	digits	
NM-points ratio:	0.000 % (0 Pts)		

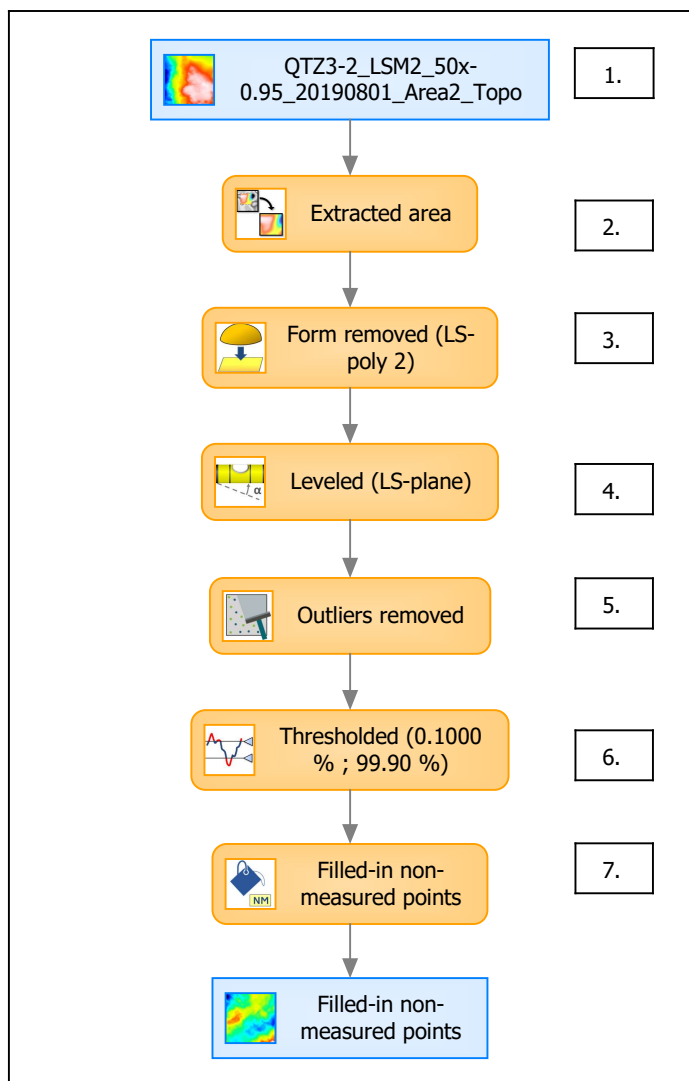


Identity card	
Name:	QTZ3-2_LSM2_50x-0....e) > Outliers removed
Axis:	Z
NM-points ratio:	0.04281 % (148 Pts)

Identity card	
Name:	QTZ3-2_LSM2_50x-0....0.1000 % ; 99.90 %)
Axis:	Z
NM-points ratio:	0.2395 % (828 Pts)



B. Summary



Identity card

Name: QTZ3-2_LSM2_50x-0.95_20190801_Area2_Topo > Extracted are...resholded (0.1000 % ; 99.90 %) > Filled-in non-measured points

Studiable type: Surface

Axis: X

Length: 50.00 μm
Size: 588 points
Spacing: 0.08519 μm

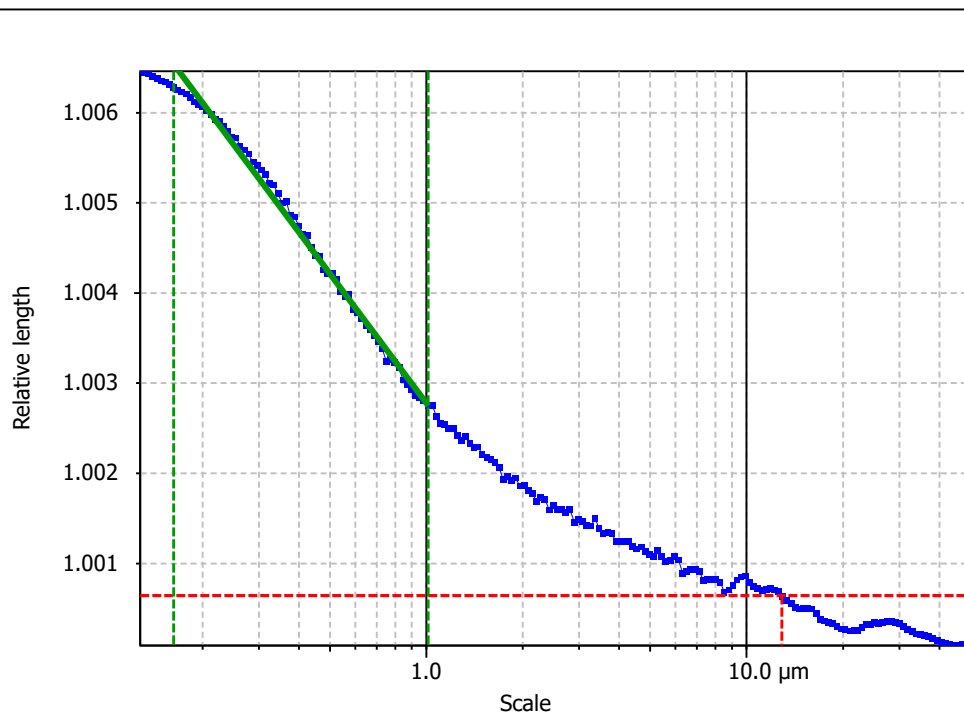
Axis: Y

Length: 50.00 μm
Size: 588 points
Spacing: 0.08519 μm

Axis: Z

Layer type: Topography

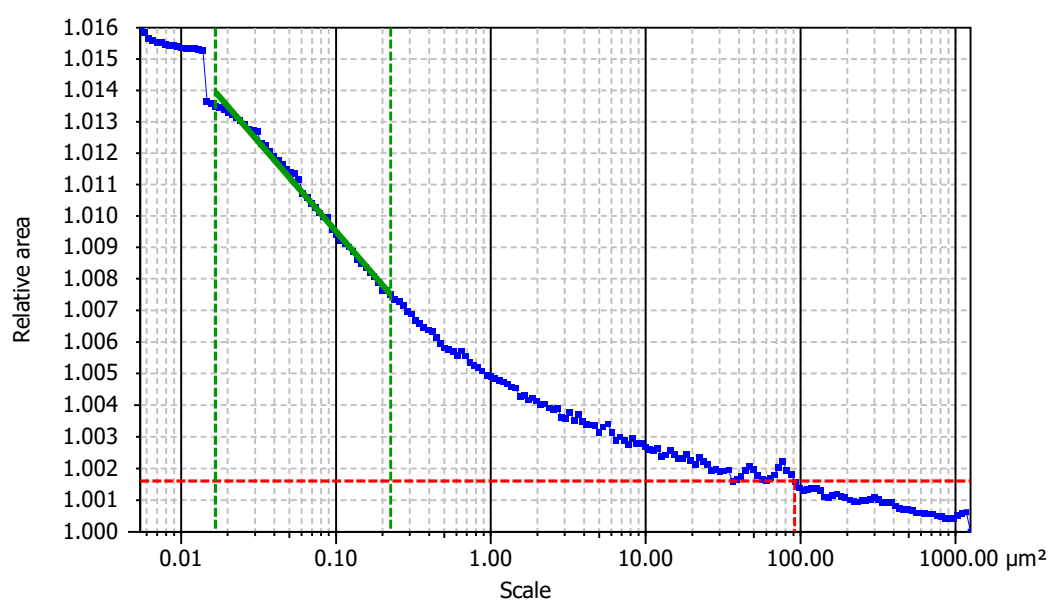
Length: 2.635 μm
Size: 1707 digits
Spacing: 0.001543 μm

**Information**

Method	Length-scale (rows)
--------	---------------------

Parameters

Parameters	Value	Unit	Comment
epLsar	0.002003		Length-scale anisotropy (Sfrax) (1.8 μm, 5°)
NewEplsar	0.01847		Length-scale anisotropy (1.8 μm, 5°)

**Information**

Method	Area-scale (four corners)
--------	---------------------------

Parameters

Parameters	Value	Unit	Comment
R ²	0.9934		Reg. coefficient R ²
Asfc	2.445		Fractal complexity
Smfc	0.07839	μm ²	Scale of max complexity
HAsfc9	0.7293		Heterogeneity of Asfc (3x3)
HAsfc81	1.478		Heterogeneity of Asfc (9x9)